



ABOUT THE SPACE & HOW TO USE IT.

We all do our part. If you're confused, refer back to *House Rules*.

Building Access & Use Procedures

As an A47 Create member, you have **24/7 access** to the space, simply input your door code followed by the # key. Note, this is YOUR door code and you may not share it with anyone else. You are ultimately responsible.

The main access door is located in the **rear of the building**, closest to the parking lot. Front door access (in the heat press area), is to be used only for emergencies or as a handicap accessible entry way.

Please be advised, this property and the building is under 24/7 surveillance.

For questions pertaining to the space and it's use, please **TEXT 978-321-2752**. For any and all emergencies, dial 911.

Sign-In Kiosk

Located near the main entry, kiosk sign in/out is required for each use. This is an important safety measure for both you and others in the space. All guests must be checked in and signed out as well.

Day Users & Private Events

Day users and walk-ins are allowed during the hours of M-F 9am-5pm.

Private events do occur from time to time, during which the space will not be accessible. In this case, you will be notified via text. You may also refer to the events page on our website for both private and public events.

Not doing so on more than one occasion is grounds for the Termination of your membership.

Certifications Needed

You must be certified to use the laser cutter, heat presses and vinyl printer. Once certified, you may use these items during staffed hours. Contact a member of the A47 Create team to schedule your certification session.

Materials Available for Purchase Onsite

We stock wood and acrylic sheets to purchase for use on the laser, as well as T-shirts and transfer foils for the heat press. Please ask about other materials that we have available for purchase onsite.

You may submit your artwork to our staff for processing for vinyl or laser cutter projects



For questions pertaining to the space and its use, please TEXT 978-321-2752. For any and all emergencies, dial 911.

Continued...

DESIGNATED ACTIVITY AREAS:

The Dusty Room

Activities that produce dust should be done here. We have very expensive equipment that is extremely sensitive to dust particles so it must be contained properly. Use the vacuum after your use and always keep door closed during use.

The Smelly Room

All smelly activities are to be done here, do not prop door open. This room is built for light scale paint projects only. Paint cups and things alike should be disposed of in this sink **ONLY**. Drying rack is provided.

The Computer Lab

The lab is provided as an amenity, all we ask is that you do not bring in food/drink. We don't care what you do at home, but **DO NOT** view illegal or inappropriate websites.

For questions pertaining to the space and it's use, please **TEXT 978-321-2752**. For any and all emergencies, dial 911.



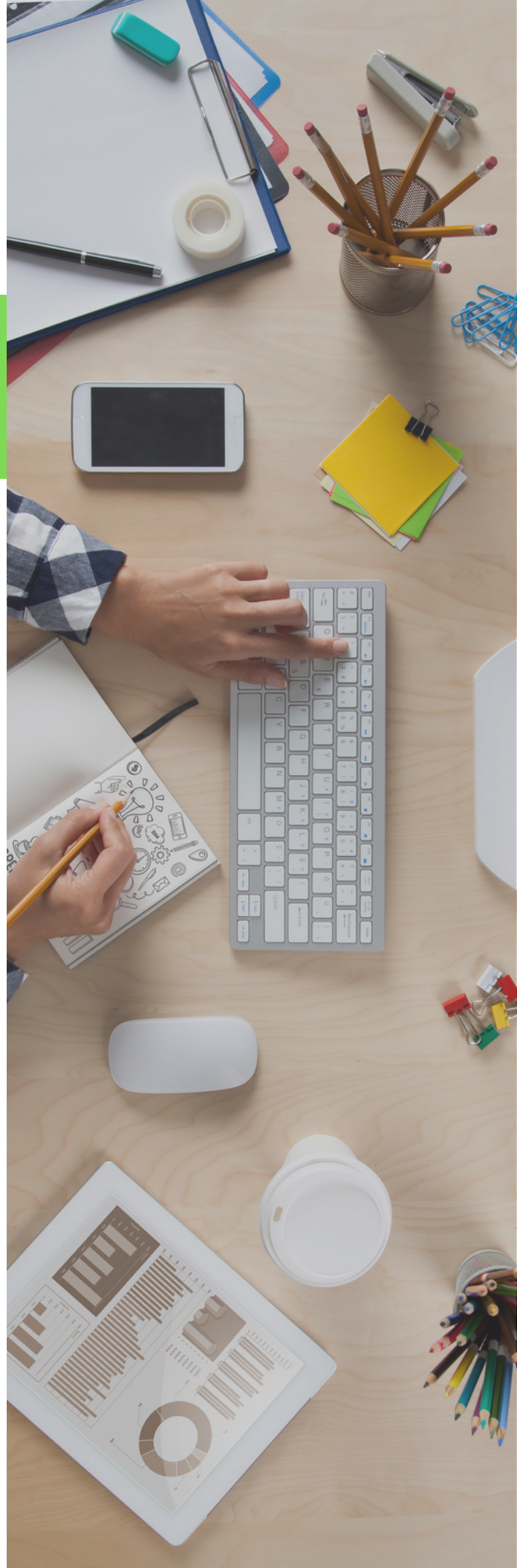
EVERYTHING ELSE YOU NEED TO KNOW.

Please get to know how
our community works.

Front door is handicap accessible
Back door is to be used as main entryway
Membership includes 3 guest passes/mon
WiFi network: Crafty Fecker
WiFi password: BCreative47
Coffee station provided on both levels
Food/bev trash goes in outside dumpster
DRY material waste only goes in blue bins
Clean your work station after use
Lockers are available for rent
Private events are coordinated through staff
Cover work surfaces with craft paper

**We are not a BYOB facility, under no
circumstances may be you bring in your
own alcohol.**

For questions pertaining to the space and it's
use, please **TEXT 978-321-2752**. For any and all
emergencies, dial 911.



IF YOU'RE THE LAST ONE HERE.

Closing Procedures - It's on you.

If you're the last one here, you're responsible for closing up. Unless you have rented a locker, please bring all of your tools, equipment and materials with you when you leave. You may leave a project drying in the Smelly Room overnight, as long as it fits on the drying rack. The work station is to be cleared off for the next user. Please note, this is at your own risk and we are not liable for your property.

All lights must be turned off. This includes the main overhead lights on the second floor, the lights in the Comp Lab and the main overhead lights in the Workshop. Also...

- If you used any equipment, turn it off.
- If you plugged anything in, unplug it.

You MUST sign out at the end of each work session, guests too.



For questions pertaining to the space and its use, please TEXT 978-321-2752. For any and all emergencies, dial 911.